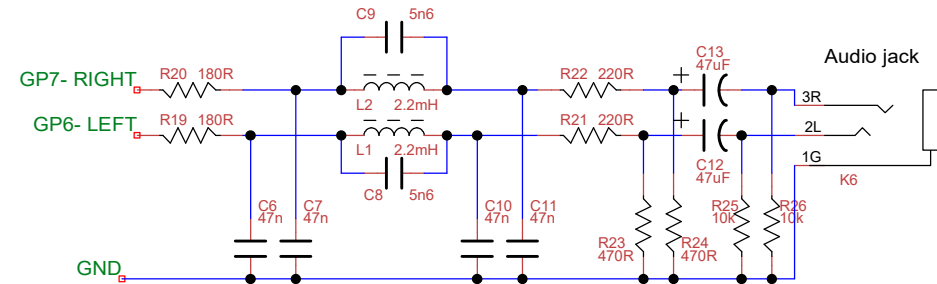
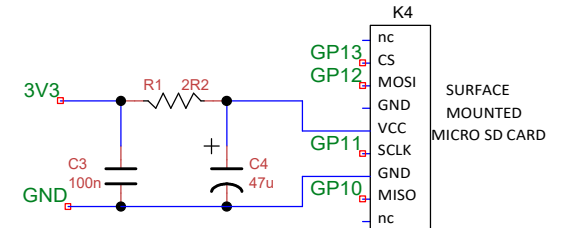
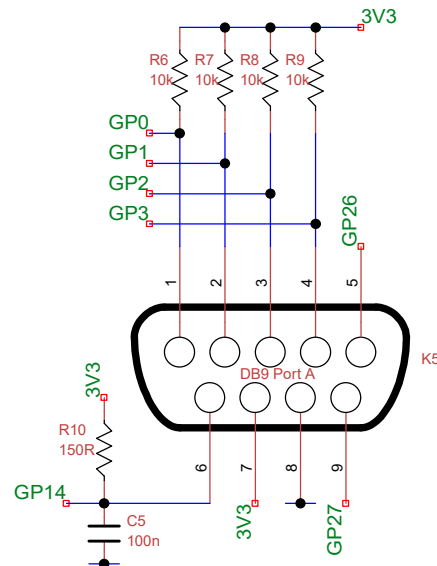
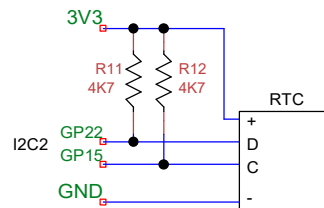
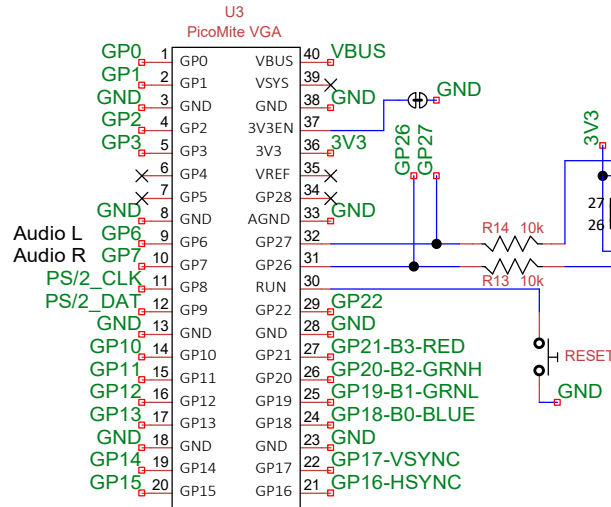
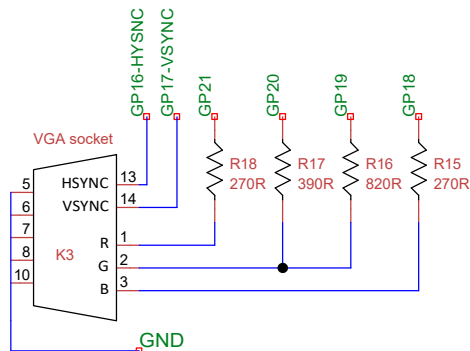


Note: 2N7000 can usually be used as a substitute but VGS(th) is a little high. Pinout is the same. BS170 is equivalent to 2N7000 and can also be used but reverse 1-3.



Note: L1, L2, C8 and C9 should ideally be 5% tolerance for best results. The other components can be 10%. It is better to get C8 and C9 closer to 6n2, e.g. 4.7nF in parallel with 1.5nF.

Note: Controller connections
Controller mode: 2=Data 3=Latch 4=Clock 6+= 8=GND
PC mode: 1=Up 2=Dn 3=Left 4=Right 6=Trig/Fire 7+= 8=GND
5=ADC0 9=ADC1

Title PicoGame Mini		
Author Mixel90		MMBasic by Geoff Graham + Peter Mather
File E:\PicoGAME Mini\PicoGAME Mini 00.dsn	Document	
Revision 0.0	Date 24 June 2022	Sheets 1 of 1